

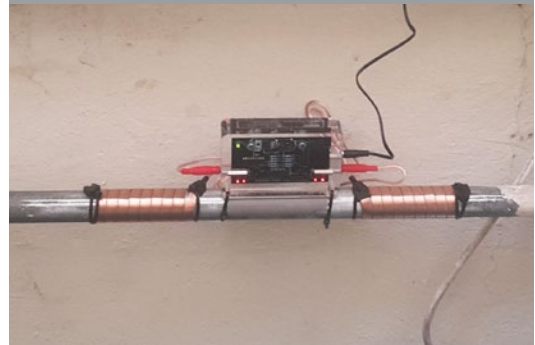
FOOD PROCESSING PLANT



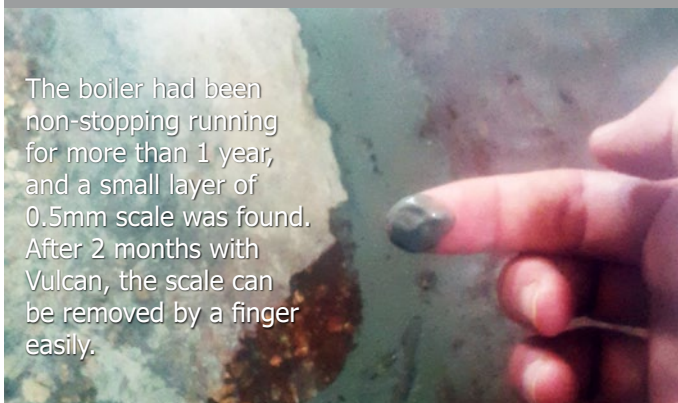
Installation details

- Location: Food processing plant (delicatessen)
- Model/Area:
- 1 x Vulcan 3000 for the boilers
 - 1 x Vulcan 3000 for the heat exchanger
 - 1 x Vulcan 5000 for 2 sterilizers
- Problem: Scale problems in the steam boilers, the sterilizers and the heat exchanger. The client had to use water softener.
- Result: The water softener is replaced with Vulcan, and old scale becomes soft.
- Installed by: STE ETCT INDUSTRIE

Vulcan 3000 treats the boilers



Vulcan effect in the boiler



See the video here: bit.ly/ma-boiler

Vulcan 3000 treats the heat exchangers



Vulcan effect in the pipes and sterilizers



See the video here: bit.ly/ma-steri

Vulcan 5000 treats 2 sterilizers

