



Installation details

Location: Jizhong District Heating Company

Model/Area: **1 x S500** installed in the heat exchange station
(The primary water temperature of the equipment is 65 °C, the secondary water temperature is 45 °C)

1 x S250 installed in domestic hot water system
(The primary water temperature of the equipment is 80 °C, the secondary water temperature is 60 °C)

Testing time: 4 months in total, one winter (November to March)

Problem: The water source is groundwater, and the plate heat exchanger was scaled badly.

Installed by: Beijing Vulcan Water

Jizhong District Heating Company

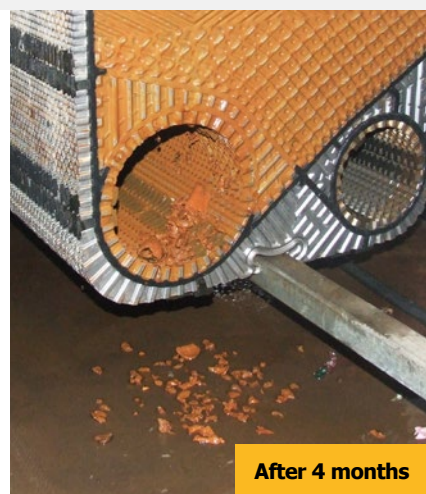
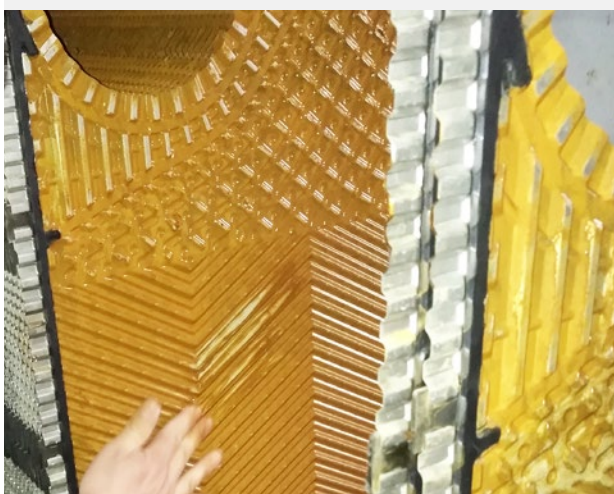


Jizhong Energy Group is based on "central heating" as its main business and integrates energy to develop centralized heating industries. Jizhong District Heating Company, as its subsidiary company, founded in 2010, provides safe and stable heating.



Vulcan S500 was installed in the heat exchange station.

The heat exchange station — Vulcan effect on the plate heat exchanger



After 4 months

The water is underground well water. Vulcan S500 was installed after cleaning the plate heat exchanger. After 4 months, no white scale was seen, only yellow rust was left. Although there were still substances in the plate heat exchanger, they had been softened.

The domestic hot water system — Vulcan effect on the plate heat exchanger



white scale

Before



The white scale has disappeared.



After 4 months

Without Vulcan S250, the plate heat exchanger was scaled badly, and it was almost blocked every month, must be cleaned manually. The scale was hard, could not be removed by hands.

We stopped using any additional chemicals to treat the water. After installing Vulcan S250 for 4 months, the effect was very clear. Although there were still substances in the plate heat exchanger, they had been softened and could be easily removed by hands. There are no more white scales, only yellow-brown impurities left.