

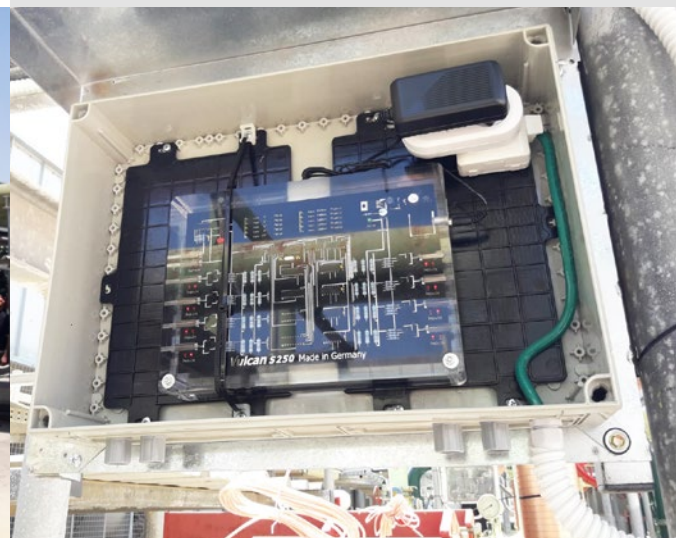
## Installation details

- Location:** The Be'er Sheva Grand Mall, Israel  
myofer.co.il
- Model/area:** **Vulcan** S250 x 4 units for 4 cooling towers
- Problem:** Each cooling tower has 2 heat exchangers.  
The difference in pressure increased between the inlet and outlet of the heat exchanger, which showed a developing blockage.  
The heat exchangers had lost in work capacity every month due to the multiplicity of scale and rust.
- Result:** 5 months after installation, there are no scale issues in any cooling tower heat exchanger systems.  
Due to the excellent results, more Vulcan will be installed for the rest of the company's facilities in Israel.
- Installed by:** EYE-IN ELECTRONICS

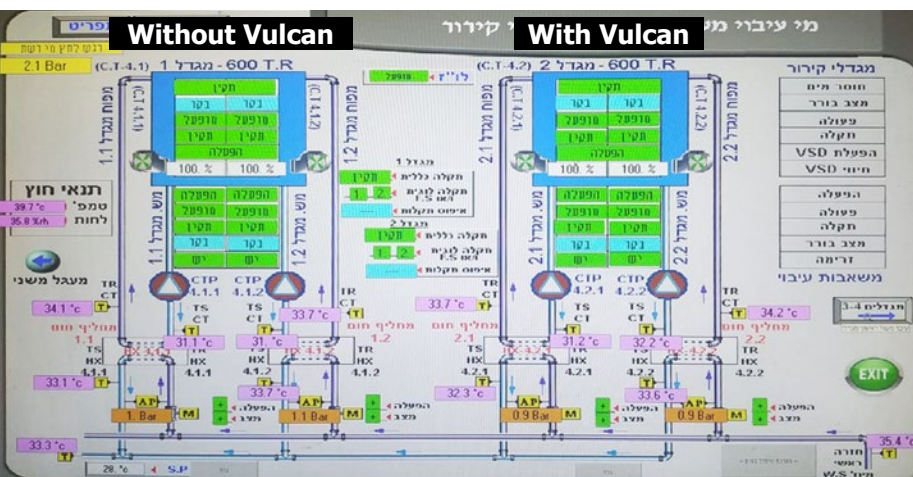


### The Be'er Sheva Grand Mall

The Be'er Sheva Grand Mall is the largest shopping mall in the southern region of Israel, located in Be'er Sheva - the capital of the Negev. It features 220 stores.



Vulcan S250 outdoor installation: on the roof, with the sun most of the year. The temperature at this time was 38 - 40 °C. In winter, it is rainy and the roof should be sealed to IP-68. Vulcan impulse bands were well wrapped and the Vulcan unit was in the outdoor box.



### The result after 5 months installation:

On the right is a cooling tower with Vulcan.

The differences are clear:

1. The **pressure difference is lower** between the exit and the inlet of the heat exchanger in the right tower.
2. The water coming out of the heat exchanger is **colder** in the right tower.