

Installation Details

Model:	Vulcan S100
Location:	A medicine factory
Treatment Area:	cooling tower
Circulation water capacity:	100 m ³ /h
Pipe Diameter:	150 A



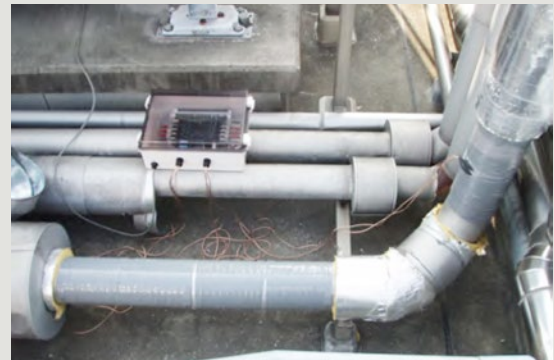
The cooling tower roof of medicine factory

Purpose:

1. Prevents from scale
2. Prevents from heat exchanger effectiveness loss
3. Cleaning maintenance cost of plate heat exchanger can be reduced

Effect:

After Vulcan was installed for some months, the scale in the cooling tower, plate heat exchanger and the pipe become soft; and it can be removed easily with a finger.



Vulcan S100 installation

Cooling Tower Grid



Before Vulcan was installed: the outside of the cooling tower.



After Vulcan was installed for 5 months: the scale can be removed easily with a finger.



Before Vulcan was installed: the inside of the cooling tower.



After Vulcan was installed for 5 months: the scale has been reduced.

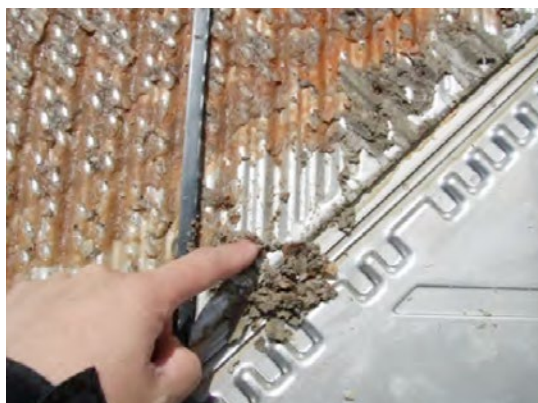
Plate Heat Exchanger



After Vulcan was installed for 9 months:
ready open the plate heat exchanger and
clean.



After Vulcan was installed for 9 months: the
plate heat exchanger was taken apart for
cleaning.



The scale on the plate heat exchanger
becomes soft.



The scale can be easily removed.

Circulation Pipe



Circulation pipe.



The scale in the circulation pipe can also be
easily removed with a finger.