




Shougang Ice Hockey Arena

Installation details

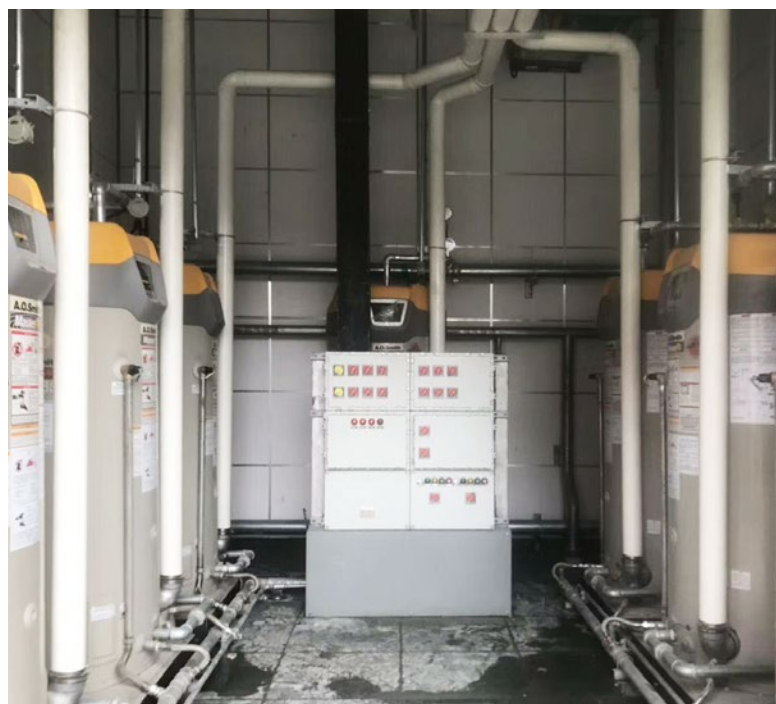
Location:	Shougang Ice Hockey Arena
Area:	The inlet of the water heater
Pipe:	DN100
Model:	 Vulcan S25
Purpose:	To solve the scaling problems of the water heater, and wish to extend the cleaning time and improve the efficiency
Installed by:	Beijing Vulcan Water

About Shougang Ice Hockey Arena

As the 2022 Beijing Winter Olympics venue, Shougang Ice Hockey Hall is the key construction project of Winter Olympics. It will become one of the most professional and advanced stadiums in China for international and national competitions.



Vulcan S10 was installed in front of the heat exchanger to solve scaling problems in heat exchangers, pumps, water tanks, shower heads and the whole piping system.



Both sides of the picture are water heaters, Vulcan S10 was installed in the water inlet of the heaters.